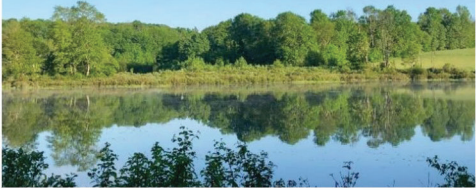


*Become ONE
with Nature!*



Just 25 minutes north of Honesdale, the Browning Beaver Meadow Sanctuary offers **78 acres** of quiet natural beauty. With **2.5 miles of hiking trails** through hemlock forests and hardwood glens and along creeks and shorelines, the sanctuary's scenery makes for a perfect trek. It is Equinunk's **best kept secret!**

Browning Beaver Meadow Sanctuary goes **above and beyond** just hiking.

Wildlife lovers can stop at the observation deck overlooking the pond for some prime birdwatching with over **80 species of birds** documented. If you're lucky, you might even catch sight of **a beaver or two**.



Browning Beaver Meadow is a pristine 78 acre preserve located 25 minutes north of Honesdale, Pennsylvania



D I R E C T I O N S

From Honesdale, take Route 191 north for 16 miles. Turn left at the Lookout General Store on Helmer's Hill Road. Proceed 0.8 miles and turn left at the sanctuary sign on Hawley Road.

C O O R D I N A T E S

41.784169, -75.193486

Hawley Road, Equinunk, PA



Browning Beaver Meadow

SANCTUARY



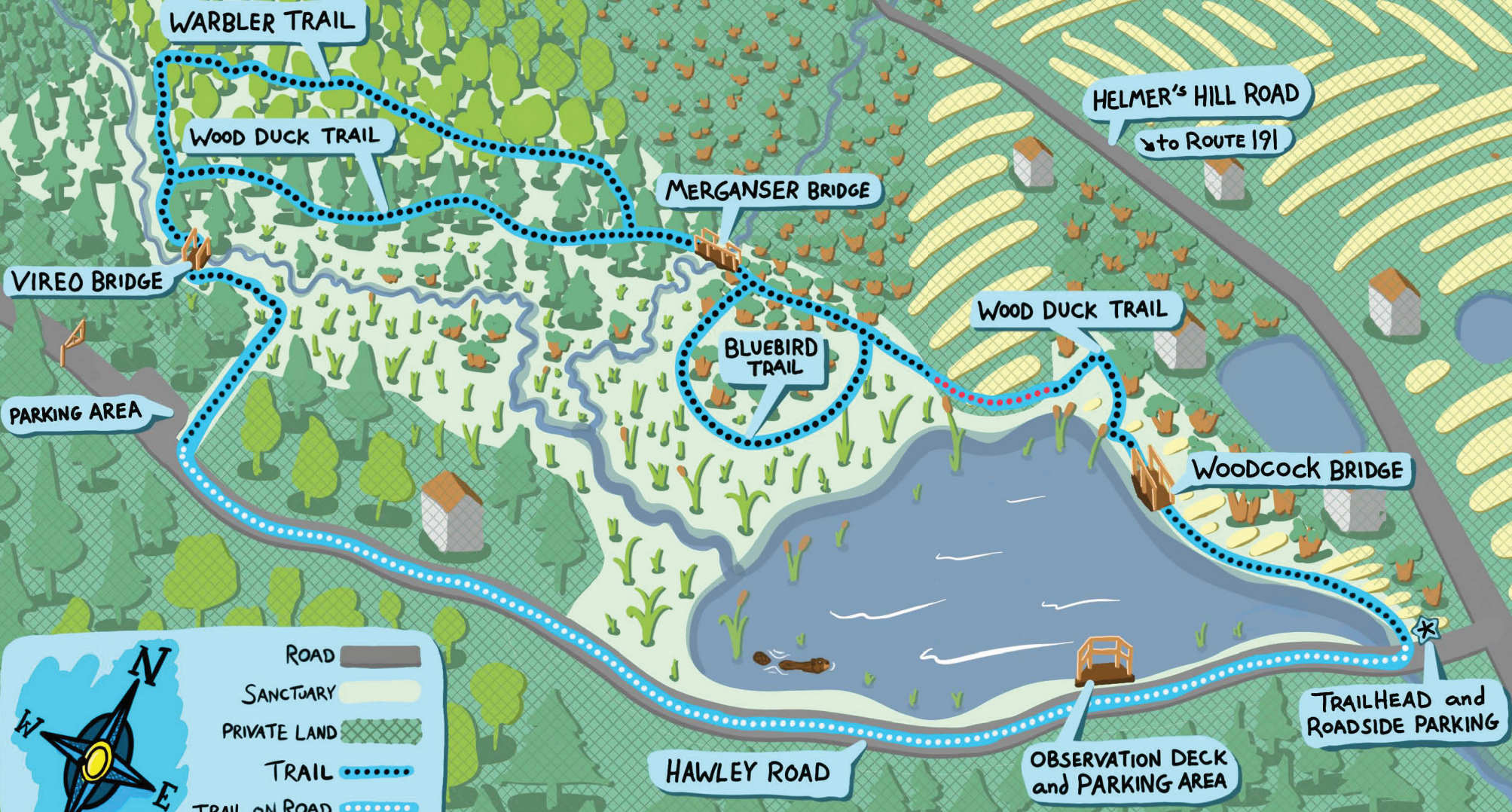
*Hiking Trails, Viewing Platform
Pennsylvania Wildlife and Birds*

Owned and Maintained by
LACAWAC
Sanctuary Field Station
AND ENVIRONMENTAL EDUCATION CENTER

WWW.LACAWAC.ORG

FREE and Open to the Public

BROWNING BEAVER MEADOW SANCTUARY



ROAD	
SANCTUARY	
PRIVATE LAND	
TRAIL	
TRAIL ON ROAD	
TRAIL ON PRIVATE LAND	

This Sanctuary has two miles of gentle trails set among 78 acres of diverse habitats.